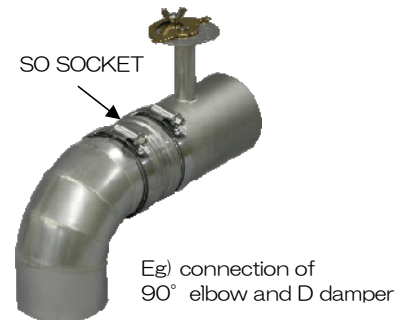


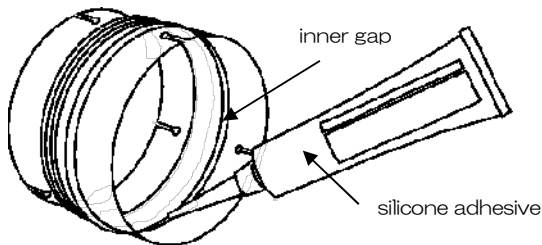
## Piping series that can easily pipe hot air generators and various air pipes

### ■ SO SOCKET (For piping connection)

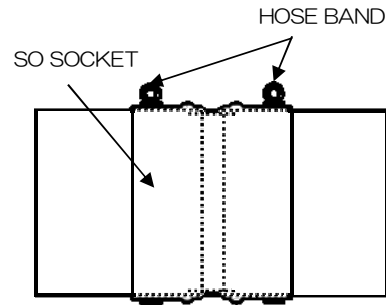
- A plug-in type pipe connection socket that can connect all of our various pipes without any gaps.  
\* Piping plate thickness for insertion 1.5 mm or less
- Since the insertion point is filled with a sealant, no air leaks.  
Zero air leakage from the insertion part with 30kPa pressurization.



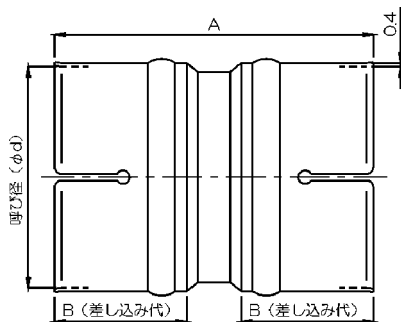
《 WAY OF CONNECTION 》



Fill the inner gap of the SO socket with silicone adhesive (see below for the filling amount).



Insert the pipe into the inner groove of the SO socket and tighten it firmly with a hose band from the outside.



- Material : SUS304
- Heatproof temp: 180°C by silicone adhesive , 350°C by core paste
- with 2 pcs of hose band

型 式	φd (mm)	A (mm)	B (mm)	質 量 (g)	シリコン接着剤 充填量 (g)	コアペースト 充填量 (g)	価 格
SO 50	50	70	≒30	42	4.7	6.5	¥8,500
SO 65	65	70	≒30	55	6.1	8.5	¥8,500
SO 75	75	70	≒30	63	7.1	9.8	¥8,800
SO100	100	90	≒40	102	9.3	13.1	¥10,200
SO125	125	90	≒40	127	11.7	16.3	¥10,700

\* The above filling amount is for both sides. Also, the filling amount is not a guaranteed value.

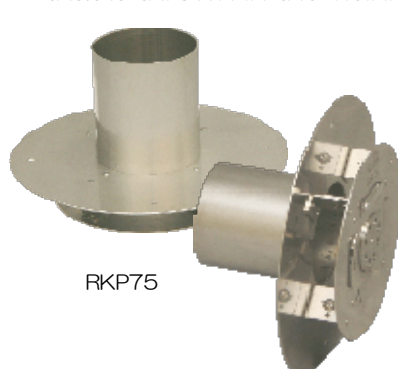
〈delicated seal adhensive〉

- silicone adhesive KE-44-W 100g/pc Price ¥2,160/pc
- core paste CP500×5 500g/pc Price ¥2,100/set=5pc

By diffusing the hot air supplied to the inside of the furnace,  
the variation in the temperature inside the furnace is reduced.

### Diffusion plate in the furnace

- The in-core diffusion plate installed in the furnace can convert the hot air discharged into the furnace in the entire circumference direction of 90° and 360° (not discharged to the front of the discharge).
- It has a low pressure loss structure that does not impair the performance of the blower, and has a structure that allows the discharge air volume to be adjusted even after installation.
- It is possible to prevent heat burning (heat dripping) of the object to be dried that is thrown in the vicinity of the hot air discharge port of the furnace body.



RKP75



RKP125

- material SUS
- heat proof temp: 350°C

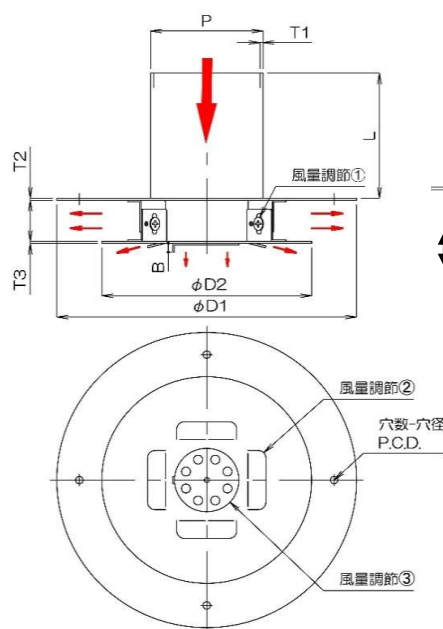
(mm)

型 式	処理風量	圧力損失※1	P	L※2	φD1	φD2	穴数	孔径	P.C.D.	A	T1	T2	T3	B	質量	価 格
RKP75	4m³/min	110Pa	φ75	85	200	140	4	φ5	170	28±5	1.0	1.2	1.2	6	0.61kg	¥15,000
RKP100	7m³/min	110Pa	φ100	85	245	185	4	φ5	215	35±6	1.0	1.2	1.2	6	0.91kg	¥19,900
RKP125	11m³/min	120Pa	φ125	85	280	220	4	φ6	25	45±7	1.0	1.2	1.2	6	1.22kg	¥25,000
RKP150	16m³/min	130Pa	φ150	85	340	280	4	φ6.5	310	50±9	1.2	1.5	1.5	10	2.15kg	¥31,500
RKP200	28m³/min	130Pa	φ200	85	410	350	4	φ6.5	380	68±11	1.2	1.5	1.5	10	3.16kg	¥39,000

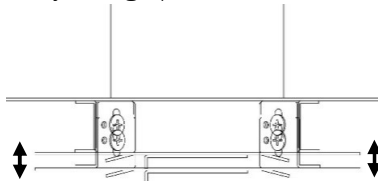
※The pressure loss is the average value at 20 °C. (Fine adjustment is possible)

※The L dimension assumes a furnace wall insulation thickness of 50 mm. If the thickness of the heat insulating material for the furnace wall is 50 mm

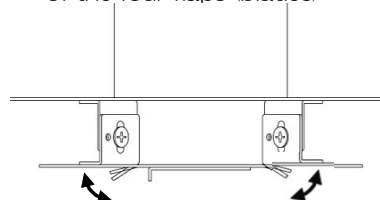
#### 《 Dimensions 》



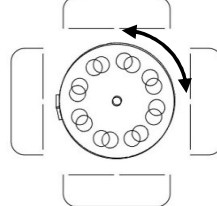
Air volume adjustment①  
• By loosening the four screws, the air volume can be adjusted by sliding up and down.



Air volume adjustment②  
• Air volume adjustment by changing the bending angles of the four flaps (blades)



Air volume adjustment③  
• Air volume adjustment by rotating the circular slide shutter



#### 《Way of Mounting 》

Please fix it to the furnace body from inside the furnace.

